

NATIONAL
PREA
RESOURCE
CENTER



BJA
Bureau of Justice Assistance
U.S. Department of Justice

NCCD

National Council on
Crime & Delinquency



JUST DETENTION
INTERNATIONAL

Getting to Work:
PREA and Victim Services in Prisons
Session 2 of 2
November 15, 2012

Introduction and Welcome

National PREA Resource Center (PRC)

PRC was established through a cooperative agreement between the Bureau of Justice Assistance and NCCD. The mission of the PRC is to assist adult prisons and jails, juvenile facilities, lockups, community corrections, and tribal facilities in their efforts to eliminate sexual abuse by increasing their capacity for prevention, detection, monitoring, responses to incidents, and services to victims and their families.

Just Detention International (JDI)

JDI is a nonprofit health and human rights organization that seeks to end sexual violence in all forms of detention.

Today's Moderator



Cynthia Totten, Esq.
Senior Program Director,
Just Detention International

Webinar Agenda

- I. Call to Action
- II. Developing an Institutional Plan
- III. The Basics of Victim Response:
SARTs and Crisis Intervention
- IV. Agreements with Service Providers
- V. Victim Services Program:
A Partner Conversation
- VI. Building Corrections and
Community Partnerships
- VII. Question and Answer

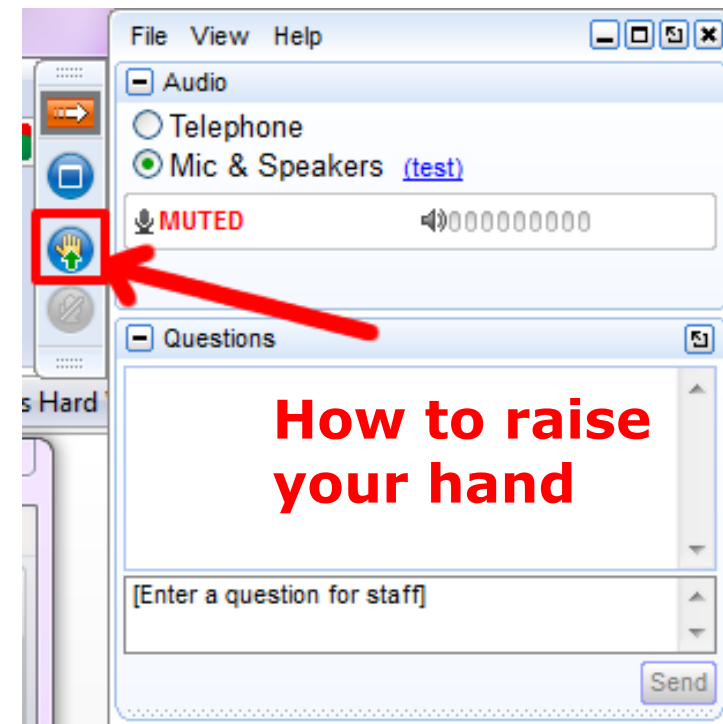


Barrilee, survivor of sexual abuse behind bars. Photo: James Stenson

Logistics

Webinar Information

- Raise your hand if you need assistance
- Use the question box to ask a question
- You can email questions to Derek at dmurray@justdetention.org
- An archive of this webinar will be posted on the PREA Resource Center website: www.prearesourcecenter.org



PREA Standards on Victim Services

Standards referenced in today's webinar will include:

- Facilities shall attempt to make available a victim advocate from a rape crisis center to provide confidential support services to a victim (§115.21(d))
- Inmate access to outside confidential support services (§115.53)
- Agreements with community service providers (§115.53(c))
- Immediate steps when inmate is at substantial risk of imminent sexual abuse (§115.62)

PREA Standards on Victim Services

Standards referenced in today's webinar will also include:

- Institutional Coordinated Response Plans (§115.65)
- Protecting staff and inmates from retaliation for reporting sexual abuse or cooperating with investigations (§115.67(a))
- Emergency and ongoing medical & mental health care (§115.82; §115.83)
- Ongoing medical and mental health care for sexual abuse victims and abusers (§115.83)
 - Sexual abuse incident reviews (§115.86)

Call to Action



Jennifer Sprafke
PREA Coordinator
Department of Corrections
Barre, Vermont

Call to Action



PREA-compliant victim services programs in prisons include:

- An institutional coordinated response plan (§115.65)
- Formal agreements with victim advocates and other services providers (§115.21, §115.53)
- Use of uniform evidence protocol that maximizes potential for collecting usable physical evidence (§115.21)*
- The provision of care in a trauma-informed manner

* Based on "A National Protocol for Sexual Assault Medical Forensic Examinations, Adults/Adolescents," www.ncjrs.gov/pdffiles1/ovw/206554.pdf.

Prisons must offer these services to victimized inmates:

- Provision of emergency medical and mental health care and forensic evidence collection (§115.21, §115.82, §115.83)
- Accompaniment by victim advocate (§115.21)
- Preventive measures (§115.82, §115.83)

Developing an Institutional Coordinated Response Plan (§115.65)

A written plan **to coordinate actions taken in response to an incident of sexual abuse**, amongst first responders, medical and mental health practitioners, investigators and facility leadership.

Developing an Institutional Coordinated Response Plan

The Institutional Coordinated Response Plan can also be a model for:

- Steps to take when an inmate is at risk
- Protection from retaliation
- Incident reviews

Developing the Institutional Coordinated Response Plan

THREE STEPS:

1. Review your agency policies related to victim services
2. Analyze how closely they align with current facility/agency practices
3. Convene a working group

The Basics of SARTs



Gwyn Smith-Downes
Senior Program Director,
Just Detention International

Key Standards for PREA Compliance

Institution-based SARTs help to comply with:

- Evidence protocol and forensic medical examinations (§115.21)
- Policies to ensure referrals of allegations for investigations (§115.22)
- Inmate reporting (§115.51)
- Inmate access to outside confidential support services (§115.53)
- Staff and agency reporting duties (§115.61)
- Reporting to other confinement facilities (§115.63)
- Staff first responder duties (§115.64)

Key Standards for PREA Compliance (continued)

Institution-based SARTs help to comply with:

- Coordinated response (§115.65)
- Agency protection against retaliation (§115.67)
- Criminal and administrative agency investigations (§115.71)
- Reporting to inmates (§115.73)
- Access to emergency medical and mental health services (§115.82)
- Ongoing medical and mental health care for sexual abuse victims and abusers (§115.83)
- Sexual abuse incident reviews (§115.86)

Sexual Assault Response Team (SART)

What is a SART?

- Multi-disciplinary team
- Specializes in coordinated, survivor-centered response to sexual assault
- SARTs lead to better care for survivors and stronger investigative outcomes.

Sexual Assault Response Team (SART)

What are the goals of a SART: Community-based versus Institution-based?

- Encourage survivor's healing and well-being
- Eliminate sexual violence – in the community versus in the corrections institution
- Ensure compliance with PREA
- Strengthens investigations

Community-Based SART

A community-based SART includes (at a minimum):

- Rape Crisis Advocate
- Sexual Assault Nurse Examiner (SANE)
- Law Enforcement Officer
- Prosecutor

Institution-Based SART

An institution-based SART:

- Leads agency's efforts to eliminate sexual violence
- Prevention
- Detection
- Response
- Draws expertise from different departments and ranks within the agency
- Is overseen by the agency PREA Coordinator
- Meets regularly to evaluate facility compliance with PREA and conduct incident reviews

Institution-Based SART – Key Members

Key Members

Members' roles may vary depending on a facility's population and needs, but will include **a minimum of three staff** from the following departments:

- Administrator
- Classification Supervisor
- Chief of Security
- Institutional Investigator
- Internal Affairs Investigator
- Mental Health Staff
- Medical Staff

Institution-Based SART – Key Members (continued)

The following community representatives are strongly recommended as members of an institution-based SART:

- Law Enforcement
- Sexual Assault Nurse Examiner (SANE)
- Rape Crisis Advocate
- Prosecutor

Basics of Crisis Intervention and Agreements with Service Providers



Linda McFarlane, MSW, LCSW
Deputy Executive Director,
Just Detention International

Securing Memoranda of Understanding with Community Service Providers

Inmate access to outside confidential support services (§115.53):

The agency maintains or attempts to maintain into memoranda of understanding or other agreements with community service providers that are able to provide inmates with confidential emotional support services. The agency shall maintain copies of agreements or documentation showing attempts.

Rape Crisis Advocate/Counselor

Role of Advocate:

- Provide confidential support and crisis intervention for survivors
- Inform the survivor about the investigation and medical examination
- Educate the survivor about healing from sexual abuse
- Offer resources and referrals
- Provide follow-up counseling, as needed



Rape Crisis Services

Acute Care	Follow-Up Care	Longer-Term Care
Crisis Intervention	Short-Term Counseling	Counseling Referrals
Hospital Accompaniment	Legal Advocacy	Groups
Psycho-Educational Approach	Safety Planning	Opportunities for Activism

Confidentiality

Key points:

- In some states, rape crisis counselors are legally bound to keep client information confidential
- Bound by professional and ethical obligations of licensing bodies
- Advocates cannot disclose names of perpetrators for the facility
- They give survivors the tools they need to make a decision whether or not to report

Memoranda of Understanding

How to get started:

- Contact your local rape crisis center
- Describe what you are trying to accomplish
- Discuss limits to confidentiality
- Address safety concerns

JDI Resource Guide:

www.justdetention.org/en/resourceguides.aspx

Office on Violence Against Women:

www.ovw.usdoj.gov/statedomestic.htm

Sample MOU

Women's Center ~ High Desert, Inc. will:

- maintain its referral file information provided by *CCI* about its services.
- provide information and specific referrals of *WC ~ HD, Inc.* clients to *CCI* when appropriate.
- provide *CCI* with *WC ~ HD, Inc.* information, referrals and victim referral cards as requested.

California Correctional Institution - Tehachapi will:

- maintain current information about *WC ~ HD, Inc.* services in its referral file.
- provide information on and refer victims of domestic violence, rape, sexual assault and sexual molestation to *WC ~ HD, Inc.* for crisis intervention and support services as appropriate.
- provide current information on *CCI* and its services to *WC ~ HD, Inc.*

Sample MOU

Both Agencies will:

- agree to participate in cross training for staff and volunteers upon request, as resources permit.
- offer consultation (specific or general) to each other on issues or situations where the expertise of the other agency could benefit a client. Any discussion of a specific client's case shall be preceded by obtaining a written waiver of confidentiality from the client.
- have designated staff meet as needed to discuss common issues, clarify working relationships and identify any other specific service coordination activity that could offer increased benefit to our mutual clients.

Model Program for Providing Victim Services

Paths to Recovery

- Advocates provide confidential, in-person crisis intervention counseling for survivors of sexual abuse
- Staff training and inmate education
- Community advocates serve on institution-based SARTs



Paths to Recovery Team in a California prison

Building Corrections and Community Partnerships



Derek Murray
Senior Program Officer,
Just Detention International

Partner Conversation



Joseph Gutierrez
Associate Warden,
California Correctional Institution

Partner Conversation



Karin Stone
Program Director,
Women's Center ~ High Desert

Partner Conversation



Partner Conversation



California Correctional Institution, Tehachapi, CA

Partner Conversation



Benefits of Partnerships for Survivors

Same quality of care that is available in the community:

- Reduces the impact of trauma and promotes healthy coping skills
- Inmates learn about their rights and how to get help
- Provides opportunities to address previous trauma



Hope, survivor of sexual abuse in detention

Benefits of Partnerships for Corrections

- More resources
- Better investigations
- Improved response
- Culture change
- Safer facilities



Former warden of the California Institution for Women, Dawn Davison, and inmates

Principles of Building Partnerships

- Seek common ground by recognizing mutual goals
- Respect each other's roles and areas of expertise
- Communicate effectively around sensitive issues
- Trust each member of the team to fulfill his/her role



JDI and Dallas County Sheriff's Office staff.

Next Steps

- Review departmental policies and protocols
- Participate in community-based SARTs
- Facilitate partnerships with community service providers
- Share resources
- Collaborate to develop new programs

Upcoming Regional Training

Victim-Centered Responses to Sexual Abuse in Detention Settings

Extended Registration Deadline: Friday, November 9, 2012

Event Date: December 6, 2012

Event Location: James N. Robey Public Safety Training Center,
Marriottsville, MD

Host: Just Detention International

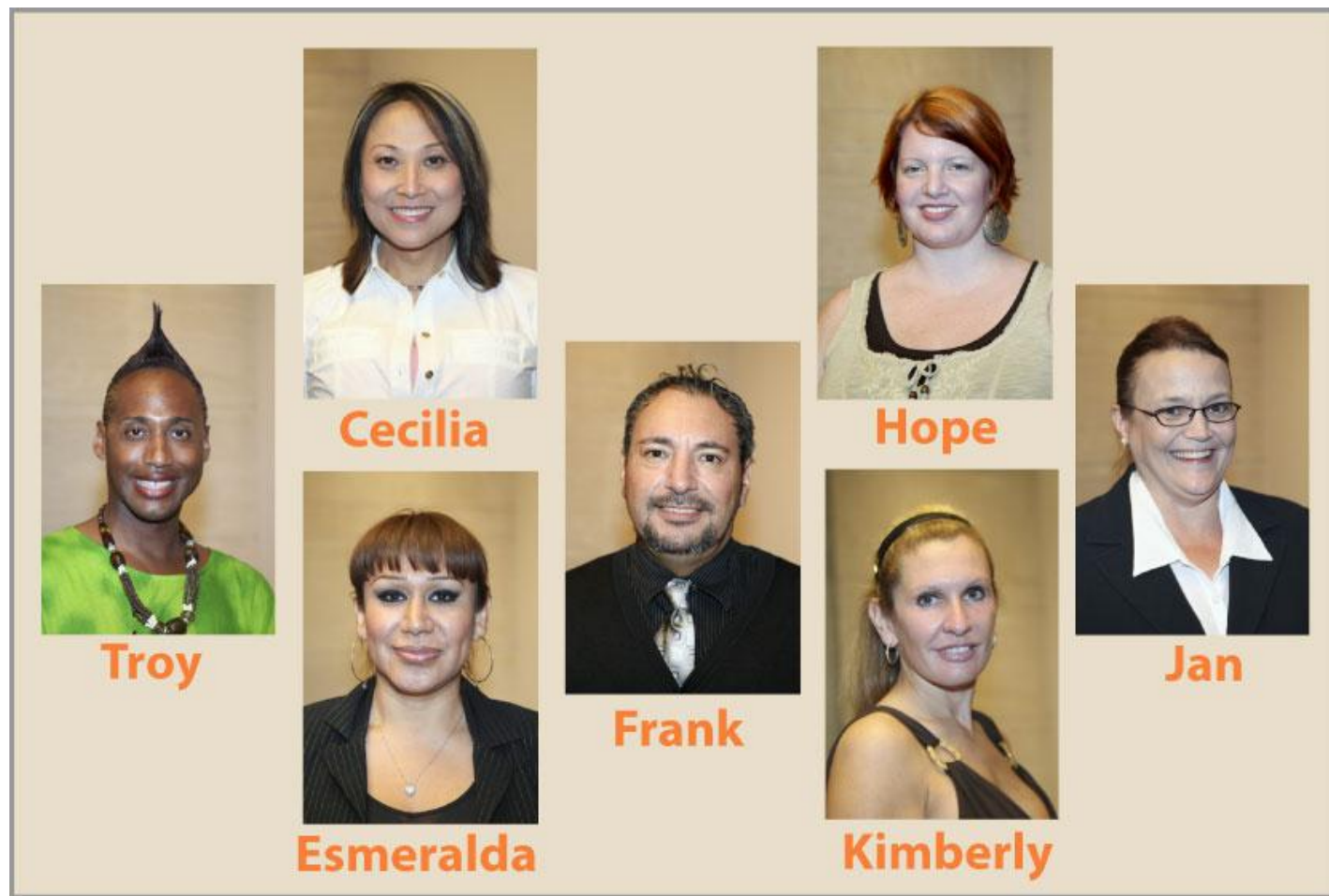
Register now at: <http://bit.ly/PJxErW>

For More information: <http://bit.ly/VeM8RW>

Questions and Answers



JDI's Survivor Council



For More Information

For more information about the **National PREA Resource Center**, visit www.prearesourcecenter.org. Direct questions to info@prearesourcecenter.org

Michela Bowman
PRC Co-Director

mbowman@nccdglobal.org

Jenni Trovillion
PRC Co-Director

jtrovillion@nccdglobal.org

Tara Graham
Sr. Program Specialist

tgraham@nccdglobal.org

For more information about **Just Detention International**, visit www.justdetention.org. Direct questions to info@justdetention.org.

Connect with JDI:



www.facebook.com/JDIonFB



www.twitter.com/justdetention



NATIONAL
PREA
RESOURCE
CENTER

Thank you for joining us today!

Evaluation

We would like to ask you to please complete a brief evaluation. It will take just three minutes of your time and your feedback will help us to better assist you in the future!

Here is a link to the evaluation; it will also be emailed to you shortly.

<http://www.justdetention.org/en/getting-to-work-evaluation.aspx>

Please forward the evaluation link to others who may have joined you.